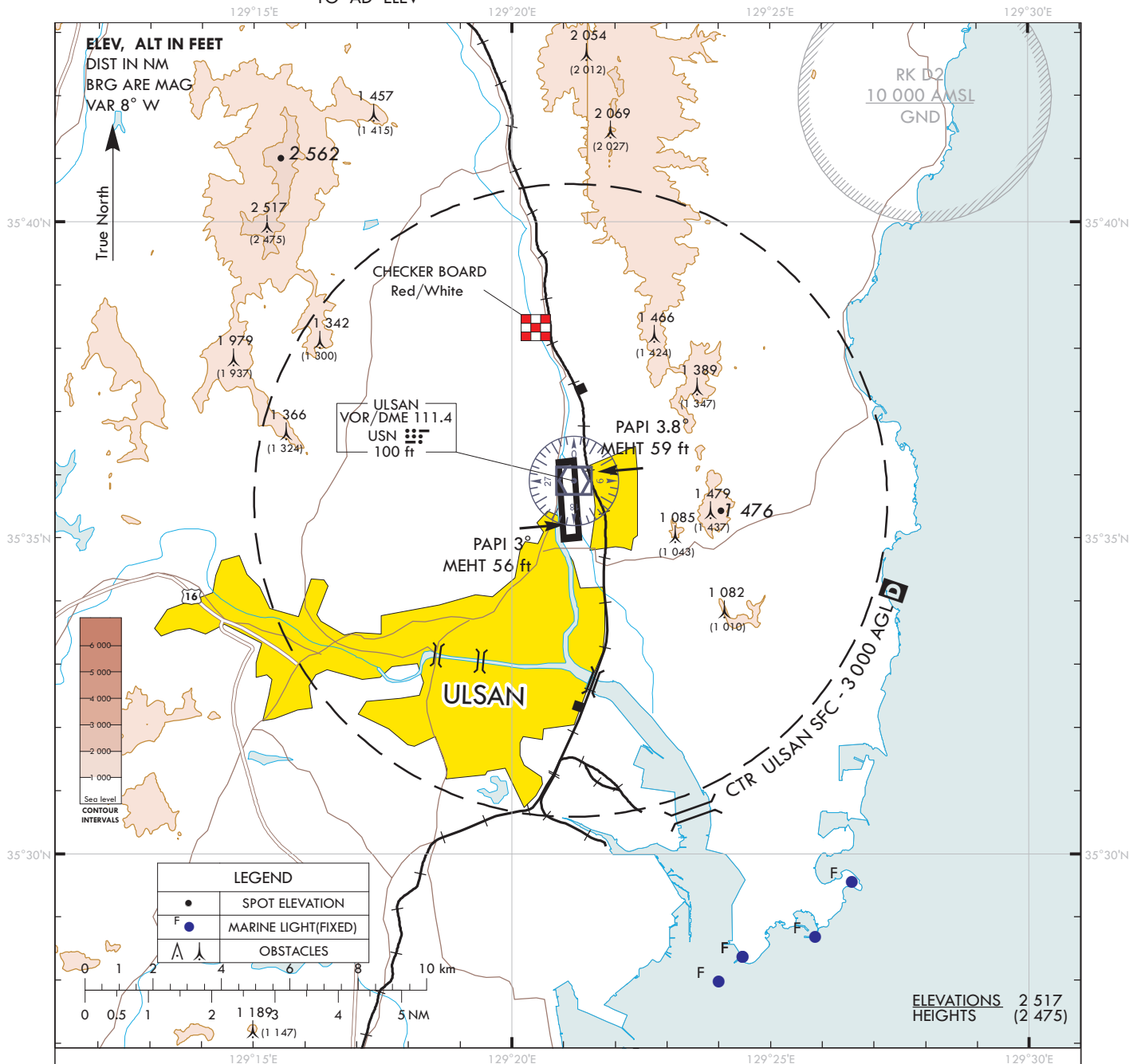


**VISUAL
APPROACH
CHART - ICAO**

AD ELEV **42 ft**
HEIGHTS RELATED
TO AD ELEV

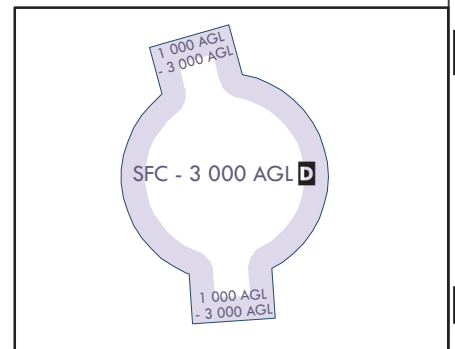
POHANG APP 124.25
ULSAN TWR 118.75

ULSAN/Ulsan



VISUAL APPROACH PROCEDURE

- Visual approach may be initiated by ATC or approved upon pilot request on traffic permitting basis when :
 - Ceiling : At or above 500 ft plus MVA
 - Visibility : Not less than 3 SM
 - Visual approach for flying east of aerodrome is not authorized.
- ATS airspace : Class D(Refer to ENR 2.1-9)



Change : Establishment of vertical limits for Class D airspace.